

COMPREHENSIVE NUTRIENT GAP ASSESSMENT (CONGA)

MICRONUTRIENT GAPS DURING THE COMPLEMENTARY
FEEDING PERIOD IN **RWANDA**

May 2021



Recommended citation

Global Alliance for Improved Nutrition (GAIN) and United Nations Children's Fund (UNICEF). *Comprehensive Nutrient Gap Assessment (CONGA): Micronutrient gaps during the complementary feeding period in Rwanda*. Geneva: GAIN, 2021.

© 2021 Global Alliance for Improved Nutrition (GAIN) and United Nations Children's Fund (UNICEF)

This work is available under the Creative Commons Attribution-Non-Commercial-Share Alike 4.0 IGO licence (CC BY-NC-SA 4.0 IGO; <https://creativecommons.org/licenses/by-nc-sa/4.0/>). Under the terms of this licence, you may copy, redistribute, and adapt the work for non-commercial purposes, provided the work is appropriately cited, as indicated above. In any use of this work, there should be no suggestion that GAIN or UNICEF endorses any specific organization, products, or services. No use of the GAIN logo or the UNICEF logo is permitted. If you adapt the work, then you must license your work under the same or equivalent Creative Commons licence. The contributions of third parties do not necessarily represent the view or opinion of GAIN or UNICEF.

Acknowledgements

This brief was written by Jessica M. White and Ty Beal. This work was funded by contributions from the Ministry of Foreign Affairs of the Netherlands (grant no. MINBUZA-2019.334151 to the Global Alliance for Improved Nutrition) and the Bill & Melinda Gates Foundation through the Regional Initiatives for Sustained Improvements in Nutrition and Growth (RISING) to UNICEF (grant no. OPP1179059). The funders had no role in data collection and analysis, manuscript preparation and revision, or the decision to publish. This study used data from public sources, and all authors had access to the data analysed as part of this study. The findings and conclusions contained within are those of the authors and do not necessarily reflect positions or policies of the Bill & Melinda Gates Foundation. We thank the nutrition teams in UNICEF's Country Offices (Rwanda), UNICEF's Eastern and Southern Africa Regional Office (ESARO), and UNICEF Headquarters for their inputs and feedback. We are grateful to Joanne E. Arsenault, who served as an expert reviewer of the preliminary ratings. Graphic design is by Danielle DeGarmo. Copy editing is by Heidi Fritschel. Cover photo credit: © Shutterstock/The Road Provides.

A dataset containing the source information on the CONGA rating process for Rwanda is available upon request at:

- Global Alliance for Improved Nutrition (GAIN). *Comprehensive Nutrient Gap Assessment (CONGA): Zimbabwe, Kenya, Rwanda (2021)*.

Contact

Global Alliance for Improved Nutrition (GAIN)
Rue de Varembé 7
1002 Geneva, Switzerland
T: +41 22 749 18 50
E: info@gainhealth.org
www.gainhealth.org

UNICEF
Nutrition Section, Programme Division
3 United Nations Plaza
New York, NY 10017, USA
E: nutrition@unicef.org
www.unicef.org



KEY MESSAGES

- A Comprehensive Nutrition Gap Assessment (CONGA) provides guidance on the use of various types of evidence to assess the public health significance of nutrient gaps in a given population.
- A CONGA conducted on child diets during the complementary feeding period in Rwanda found that, based on available evidence, there are potential gaps in calcium, vitamin B₁₂, iron, vitamin A, and zinc, but more research is needed to assess these nutrient gaps.
- The best food sources to fill potential micronutrient gaps include liver, small dried fish, beef, eggs, and dark green leafy vegetables.
- More research is needed to understand the primary barriers to consuming these foods, such as limited availability, accessibility, affordability, or desirability.
- Biofortification, fortification, and supplementation can also help fill gaps for micronutrients of concern, particularly where food insecurity, social norms, or lack of palatability or desirability make sufficient consumption from accessible diverse foods infeasible.

WHY IS ASSESSING NUTRIENT GAPS IMPORTANT FOR CHILD DIETS?

Inadequate quantity and quality of foods between 6 and 23 months of age—known as the complementary feeding period, when breast milk alone is no longer sufficient to meet the nutritional needs of infants and young children—are key causes of all forms of malnutrition, including micronutrient deficiencies, and have immediate and long-term consequences. In the short term, these consequences include increased morbidity and mortality and delayed cognitive and motor development.¹ In later childhood, adolescence, and adulthood, poor nutrition in early life can impair academic and work capacity, reproductive outcomes, and overall health, hindering economic development and contributing to the intergenerational cycle of malnutrition.¹⁻³ Yet young children's diets in Rwanda are very poor: only 28% of children 6–23 months of age consume a diet meeting the minimum recommended number of food groups, and only 47% are fed the minimum recommended number of times per day.⁴ Only one in five children 6–23 months of age in Rwanda consume iron-rich foods, and 74% consume foods rich in vitamin A.⁵

Improving young children's diets in Eastern and Southern Africa can help prevent all forms of malnutrition, including micronutrient deficiencies, and is an important component of efforts to achieve the global nutrition targets of the World Health Assembly and the Sustainable Development Goals. Insight into specific problematic nutrients, along with the foods and feeding practices that can address those problems, is essential to inform policies and programmes designed to improve child health and nutrition. Evidence on nutrient intakes and deficiencies is frequently available yet often

underused or misinterpreted in decision-making and programme design, in part because relevant evidence often comes from disparate data sources of varying quality, representativeness, and recency. Available evidence has not been synthesized to produce a clear and comprehensive picture of the magnitude and significance of micronutrient gaps in Rwanda. As a result, policies and programmes designed to improve young children's diets often omit specific reference to micronutrient gaps.

A method called Comprehensive Nutrition Gap Assessment (CONGA) was developed to fill this information gap. This approach provides guidance on how to use various types of evidence to assess the public health significance of nutrient gaps in a given population. This brief summarizes the results of a CONGA of the complementary feeding period in Rwanda. After identifying micronutrient gaps, it determines the most micronutrient-dense whole-food sources available in part or all of the country to fill the identified gaps.

METHODS

The micronutrients assessed were those identified as commonly lacking in the diets of infants and young children during the complementary feeding period: iron, vitamin A, zinc, calcium, iodine, thiamine, niacin, vitamin B₁₂, vitamin B₆, folate, and vitamin C (macronutrients such as protein were excluded from the CONGA owing to limited data availability).¹ The analysis for Rwanda followed the steps outlined in the CONGA methodology.⁶

Step 1: A literature search was conducted to identify information on the five types of evidence relevant for assessing nutrient gaps: (1) biological, clinical, and

functional markers, (2) nutrient adequacy of individual diets, (3) nutrient adequacy of household diets, (4) nutrient adequacy of national food supplies, and (5) intake of nutrient-informative food groups (e.g., iron-rich foods) by individuals or households. Other related evidence outside of these categories was also considered. Collated data points and their associated metadata (evidence type, geographic representation, recency of data collection, age and sex representation, and sample size) were captured in a spreadsheet.⁷

Step 2: Data points were reviewed and assigned an implied nutrient gap burden score (based on suggested prevalence and mean ranges for commonly available population-level indicators from all five evidence types per the CONGA methodology).⁶

Step 3: Weight scores were systematically assigned to captured metadata to calculate an overall evidence weight score for each data point, helping to ensure that the most recent, representative, and relevant data were weighted more heavily when assessing nutrient gaps.

Step 4: A quantitative nutrient gap burden score was calculated for each nutrient using only data from the five core evidence types noted above (i.e., excluding 'other' data), data collected in 2010 or later, and data for age groups similar to children 6–23 months of age. A numerical score was calculated by using the weighted mean of the implied gap burden score (where the evidence weights are the weight scores) and assigned a label of high, moderate, low, or negligible.

Step 5: The calculated quantitative nutrient gap burden scores were reviewed alongside the totality of evidence for each nutrient, including 'other' data and additional available information for each data point (such as temporal trends for data points, where available), to determine whether the final rating assigned to the nutrient gap should deviate from the quantitative-derived rating. A final qualitative rating of high, moderate, low, or negligible was assigned to each nutrient, and any deviation from the calculated quantitative burden score was documented and explained.

Step 6: A certainty-of-evidence rating (high, moderate, low, or unknown) was established for each final nutrient gap burden score based on CONGA methodology criteria,⁶ which consider the evidence weight scores from step 3 and the level of agreement between data points. These criteria-based ratings were also subjected to a final qualitative review, considering all evidence,

to determine whether the final certainty rating should deviate from the criteria-based rating. Any deviations were discussed and documented.

Step 7: A group of subject matter and contextual knowledge experts reviewed the final nutrient gap burden and evidence-certainty ratings produced in steps 5 and 6, respectively. Disagreements with final qualitative ratings were discussed and critically re-evaluated. Ratings were finalized only when consensus was achieved, and documentation of additional considerations or deviations from quantitative burden scores was added.

The most micronutrient-dense available food sources for identified micronutrient gaps were determined using data on food composition and household consumption patterns.⁸ Foods were also assessed for how well they met the needs for six micronutrients commonly lacking in young children's diets in Eastern and Southern Africa: iron, vitamin A, zinc, folate, vitamin B₁₂, and calcium.⁹ This metric was calculated as the average percentage of daily requirements from complementary foods for these six micronutrients based on a quantity of 100 grams (g) for each food (with each micronutrient's contribution capped at 100% of daily requirements). We also calculated the portion size of each food required to achieve an average of 33.3% of micronutrient requirements (again, capped at 100% of requirements for each micronutrient)—the equivalent of 100% of requirements for two micronutrients or 33.3% of requirements for all six micronutrients—to demonstrate the ideal foods to fill two or more important micronutrient gaps simultaneously. Adjustments for differences in bioavailability between plant- and animal-source foods were made for iron and zinc.^{8,10}

NUTRIENT GAPS AND EVIDENCE CERTAINTY

A total of 45 data points for the complementary feeding period in Rwanda were identified for this CONGA. These included data points from Demographic and Health Surveys, a subnational Food and Nutrition Survey, and other relevant global, national, and subnational sources. Fewer than half of these (16) fell into the five key evidence types and qualified for inclusion in the quantitative burden score.⁷

Availability of data points for the five core evidence types varied. Biological and functional markers were identified for iron, vitamin A, and iodine; the vitamin A and iodine prevalence estimates, however, were both from the 1990s and thus were not included in the quantitative burden score. Subnational prevalence of iron

deficiency was available for children 6–59 months of age. Evidence on the nutrient adequacy of individuals was available for only iron and zinc from the subnational Food and Nutrition Survey. No data were identified on nutrient adequacy of household diets. Estimates of the nutrient adequacy of national food supplies were available for all nutrients. Nutrient-informative food group estimates for individuals were available for vitamin A, iron, and iodine. There were multiple data points categorized as ‘other’ for most nutrients.⁷

Based on available evidence, no clear micronutrient gaps—defined as having a burden *and* evidence certainty rating of at least moderate⁷—were identified during the complementary feeding period in Rwanda. However, potential nutrient gaps were identified for calcium and vitamin B₁₂, each with a high gap burden but low-certainty evidence, and for iron, vitamin A, and zinc, each with a moderate gap burden but low-certainty evidence. Calcium deficiency increases the risk of rickets, but the broader health implications of deficiency in young children are poorly understood.¹¹ Vitamin B₁₂ deficiency in infants and young children can have immediate and long-term consequences, including anaemia, hindered brain development, and adult depression.^{12,13} Iron deficiency is a primary cause of anaemia and can result in cognitive impairment, decreased work productivity, and death.¹⁴ Vitamin A deficiency, even when mild, has severe consequences, including night blindness, increased susceptibility to infection, and death.¹⁵ Zinc deficiency in children is associated with poor health, increased risk of diarrhoea, and impaired cognitive and motor development.^{16,17} More data are needed to generate higher-quality evidence on the burden of nutrient gaps for these nutrients.⁷

AVAILABLE FOODS TO FILL NUTRIENT GAPS

Available whole-food sources in Rwanda rich in six micronutrients commonly lacking in children’s diets (iron, zinc, vitamin A, vitamin B₁₂, folate, and calcium) are listed in Table 2, including micronutrient densities and average share of nutrient requirements for all six nutrients. The best whole-food sources of multiple micronutrients, as measured by average share of requirements per 100 g portion, are small dried fish, chicken liver, beef liver, eggs, beef, chicken, and dark green leafy vegetables. For example, 100 g of small dried fish will achieve on average 88% of requirements across these six micronutrients for children aged 6–23 months.⁹

Figure 1 shows the portion size of each food needed to meet an average of 33.3% of micronutrient requirements across the same six micronutrients. Notably, only 1 g of beef liver, 3 g of chicken liver, 6 g of small dried fish,

27 g of beef, or 35 g of eggs are required to reach this threshold for children 6–23 months, demonstrating the importance of these nutrient-dense animal-source foods in young children’s diets. Larger quantities are required for other animal-source foods (chicken and milk) to achieve this threshold. While a moderate-sized portion (72 g) of dark leafy greens can meet the threshold, a

TABLE 1. Nutrient gaps and evidence-certainty ratings for children 6–23 months in Rwanda

Nutrient	Gap burden	Evidence certainty
Calcium	High	Low
Vitamin B ₁₂	High	Low
Iron	Moderate	Low
Vitamin A	Moderate	Low
Zinc	Moderate	Low
Niacin	Low	Low
Thiamine	Low	Low
Iodine	Negligible	Low
Folate	Negligible	Low
Vitamin C	Negligible	Low
Vitamin B ₆	Negligible	Low

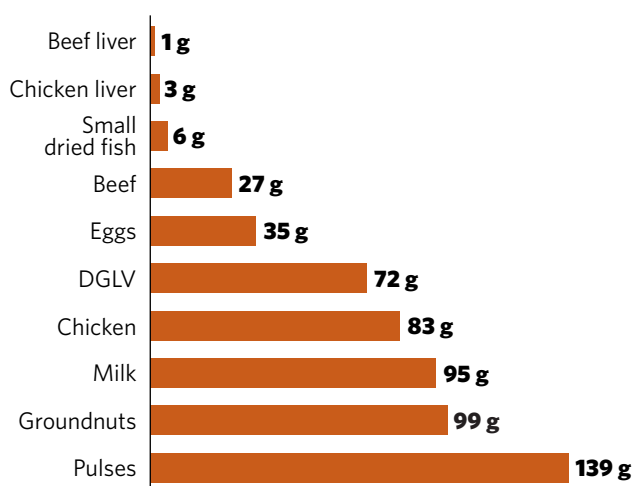


FIGURE 1. Portion size needed to achieve an average of 33.3% of micronutrient requirements for iron, vitamin A, zinc, folate, vitamin B₁₂, and calcium from complementary foods. Each micronutrient’s contribution is capped at 100% of daily requirements. DGLV = dark green leafy vegetables.

TABLE 2. Micronutrient density and average share of requirements per 100 g of foods high in priority micronutrients

Food	Iron (mg)	Zinc (mg)	Vitamin A (RAE)	Folate (DFE)	Vitamin B ₁₂ (µg)	Calcium (mg)	Average share of requirements for all six nutrients
Small dried fish	10.4	10.0	363	19	12.0	2,030	88%
Chicken liver	12.3	4.0	4,139	569	19.0	11	84%
Beef liver	6.5	5.3	9,442	253	70.6	6	84%
Eggs	1.2	1.1	149	44	1.1	50	59%
Beef	2.8	6.5	0	8	2.6	8	46%
Chicken	1.2	1.9	46	5	0.3	14	42%
DGLV	3.2	0.3	256	42	0.0	98	40%
Milk	0.0	0.4	46	5	0.5	113	37%
Groundnuts	1.3	2.3	0	86	0.0	57	34%
Fresh/frozen fish	0.7	0.5	33	4	4.4	14	34%
Pulses	2.3	1.1	0	84	0.0	25	29%
Carrot	0.3	0.2	852	14	0.0	30	23%
Pumpkin	0.6	0.2	288	9	0.0	15	22%

Note: These six micronutrients were selected as priorities because they are commonly lacking in young children's diets in Eastern and Southern Africa and because the consequences of observed deficiencies can be severe. All foods are in the form typically consumed. Composition data are from a combination of local and United States Department of Agriculture food composition databases.¹⁸ Bold numbers indicate the highest nutrient density for the specified nutrient or average share of requirements. Average share of requirements for iron, zinc, vitamin A, vitamin B₁₂, folate, and calcium is shown per 100 g of food, assuming requirements from complementary foods for children 6–23 months (with each micronutrient's contribution capped at 100% of daily requirements). The proportion of nutrient requirements from complementary foods was assumed to be 0.98 for iron, 0.87 for zinc, 0.65 for calcium, 0.17 for vitamin A, 0.70 for vitamin B₁₂, and 0.60 for folate.¹⁹ Iron and zinc requirements were adjusted for bioavailability. For iron, a value of 15% was assumed for the dietary bioavailability of animal-source foods and 10% for plant-source foods; for zinc, a value of 50% was assumed for dietary bioavailability of animal-source foods and 30% for legumes, nuts, and seeds.²⁰ Mg = milligram; RAE = retinol activity equivalent; DFE = dietary folate equivalent; µg = microgram; DGLV = dark green leafy vegetables.

larger portion of groundnuts (99 g) or pulses (139 g) would be required to achieve the same outcome.⁹

CONCLUSIONS

To design policies and programmes to improve child health and nutrition, it is essential to identify the nutrient and dietary gaps they face during the complementary feeding period.²¹ Identifying these gaps requires reliable and representative data. Using CONGA to assess gaps

during the complementary feeding period in Rwanda allowed for investigation of different evidence types and sources that are not usually synthesized to assess child diets. This assessment used only existing evidence and required no primary data analysis.* The CONGA methodology also explicitly considers and accounts for instances in which data points disagree on the implied magnitude of nutrient gaps and for differences in the data points' quality or recency.

* Other methods exist for collating and assessing a wide range of data sources in an effort to better guide policy and programming decisions on diets. For example, the Fill the Nutrient Gap exercise designed and implemented by the World Food Programme provides a comprehensive look at the environment within which observed diets are shaped but, in contrast to the CONGA, provides no estimates of nutrient gaps, their health impacts, or the certainty of the evidence reviewed.

While there were no clear gaps during the complementary feeding period owing to low-certainty evidence, potential gaps were identified for calcium, vitamin B₁₂, iron, vitamin A, and zinc. Increasing the quality of whole foods consumed by young children is an ideal solution to help overcome these gaps. Animal-source foods, particularly liver, small dried fish, beef, and eggs, were found to be the most nutrient-dense whole-food sources of identified nutrient gaps in Rwanda. Dark green leafy vegetables were also identified as a good source of iron, vitamin A, folate, and calcium. Alternative strategies to fill nutrient gaps include biofortified foods, fortified staple foods, fortified complementary foods, point-of-use fortification products such as micronutrient powders and lipid-based nutrient supplements, and periodic micronutrient supplementation. All of these strategies may be warranted in parts of Rwanda, particularly where food insecurity, social norms, or lack of palatability or desirability make sufficient consumption from accessible diverse whole foods infeasible.

Continued breastfeeding until two years of age (or beyond) also makes an important contribution to child diets. Continued breastfeeding rates in Rwanda are high (>80%) throughout the complementary feeding period.⁴ Efforts to maintain continued breastfeeding rates should be prioritized. Raising the quality of pregnant and lactating women's diets can also enhance their children's nutrition by improving birth outcomes, increasing nutrient transfers at birth, and resulting in more nutrient-dense breast milk.²²

To achieve greater certainty about the magnitude of potential nutrient gaps in calcium, vitamin B₁₂, iron, vitamin A, and zinc, new data collection and evidence generation in Rwanda should be prioritized. Further research is also required to understand the causes of nutrient gaps, including both supply- and demand-side barriers. It is important to understand the primary barriers to consuming nutrient-dense whole foods, whether they are related to limited availability, affordability, or desirability. Finally, strategic actions to improve children's diets will require engagement and intervention across relevant systems, including food; social protection; health; and water, sanitation, and hygiene.

REFERENCES

1. Pan American Health Organization. *Guiding Principles for Complementary Feeding of the Breastfed Child*. Washington, DC: PAHO; 2003.

2. Stewart CP, Iannotti L, Dewey KG, Michaelsen KF, Onyango AW. Contextualising complementary feeding in a broader framework for stunting prevention. *Matern Child Nutr*. 2013;9(Suppl 2):27-45.
3. Black RE, Victora CG, Walker SP, et al. Maternal and child undernutrition and overweight in low-income and middle-income countries. *Lancet*. 2013;382(9890):427-451.
4. United Nations Children's Fund (UNICEF). *Infant and young child feeding data*. Published 2020. Accessed Dec 1, 2020.
5. National Institute of Statistics of Rwanda, Ministry of Finance and Economic Planning, Ministry of Health, ICF International. *Rwanda Demographic and Health Survey 2014-15*. Kigali, Rwanda: National Institute of Statistics of Rwanda, Ministry of Finance and Economic Planning, Ministry of Health, ICF International; 2016.
6. Beal T, White JM, Arsenault JE, Okronipa H, Hinnouho G-M, Morris SS. Comprehensive Nutrient Gap Assessment (CONGA): A method for identifying the public health significance of nutrient gaps. *Nutr Rev*. 2021;79(4,Suppl 1):4-15.
7. Global Alliance for Improved Nutrition (GAIN). *Comprehensive Nutrient Gap Assessment (CONGA): Zimbabwe, Kenya, Rwanda (2021)*.
8. Ryckman T, Beal T, Nordhagen S, Chimanya K, Matji J. Affordability of nutritious foods for complementary feeding in Eastern and Southern Africa. *Nutr Rev*. 2021;79(4,Suppl 1): 35-51.
9. White JM, Beal T, Arsenault JE, et al. Micronutrient gaps during the complementary feeding period in six countries in Eastern and Southern Africa: A Comprehensive Nutrient Gap Assessment. *Nutr Rev*. 2021;79(4,Suppl 1):16-25.
10. Ryckman T, Beal T, Nordhagen S, Murira Z, Torlesse H. Affordability of nutritious foods for complementary feeding in South Asia. *Nutr Rev*. 2021;79(4,Suppl 1):52-68.
11. Pettifor JM. Calcium and vitamin D metabolism in children in developing countries. *Ann Nutr Metab*. 2014;64(Suppl 2):15-22.
12. Black MM. Effects of vitamin B₁₂ and folate deficiency on brain development in children. *Food Nutr Bull*. 2008;29(2 Suppl):S126-131.
13. Dror DK, Allen LH. Effect of vitamin B₁₂ deficiency on neurodevelopment in infants: current knowledge and possible mechanisms. *Nutr Rev*. 2008;66(5):250-255.
14. Stoltzfus RJ. Iron deficiency: global prevalence and consequences. *Food Nutr Bull*. 2003;24(4 Suppl):S99-103.
15. Sommer A. *Vitamin A Deficiency and Its Consequences: A Field Guide to Detection and Control*. Geneva: World Health Organization; 1995.
16. Semrad CE. Zinc and intestinal function. *Curr Gastroenterol Rep*. 1999;1(5):398-403.
17. Black MM. Zinc deficiency and child development. *Am J Clin Nutr*. 1998;68(2 Suppl):464S-469S.
18. United States Department of Agriculture, Agricultural Research Service. *FoodData Central*. Accessed January 26, 2020.
19. Dewey KG. Nutrition, growth, and complementary feeding of the breastfed infant. *Pediatr Clin North Am*. 2001;48(1):87-104.
20. World Health Organization (WHO), Food and Agriculture Organization of the United Nations (FAO). *Vitamin and Mineral Requirements in Human Nutrition*. 2nd ed. Geneva: WHO and FAO; 2004.
21. UNICEF. *Improving Young Children's Diets during the Complementary Feeding Period. UNICEF Programming Guidance*. New York: UNICEF; 2020.
22. Allen LH. B vitamins in breast milk: relative importance of maternal status and intake, and effects on infant status and function. *Adv Nutr*. 2012;3(3):362-369.